



6"

2014 Frank Burke

No commercial reproduction

F-105 Thunderchief parkjet or rocket glider

39" long 26" w/s

2 servos - full flying tail

Grayson microjet V-3 w/APC 6x4

800 mah 3S, 18 A esc or similar

6mm Depron

use 1/4" aileron throw

1" elevator throw @ TE for

First flights

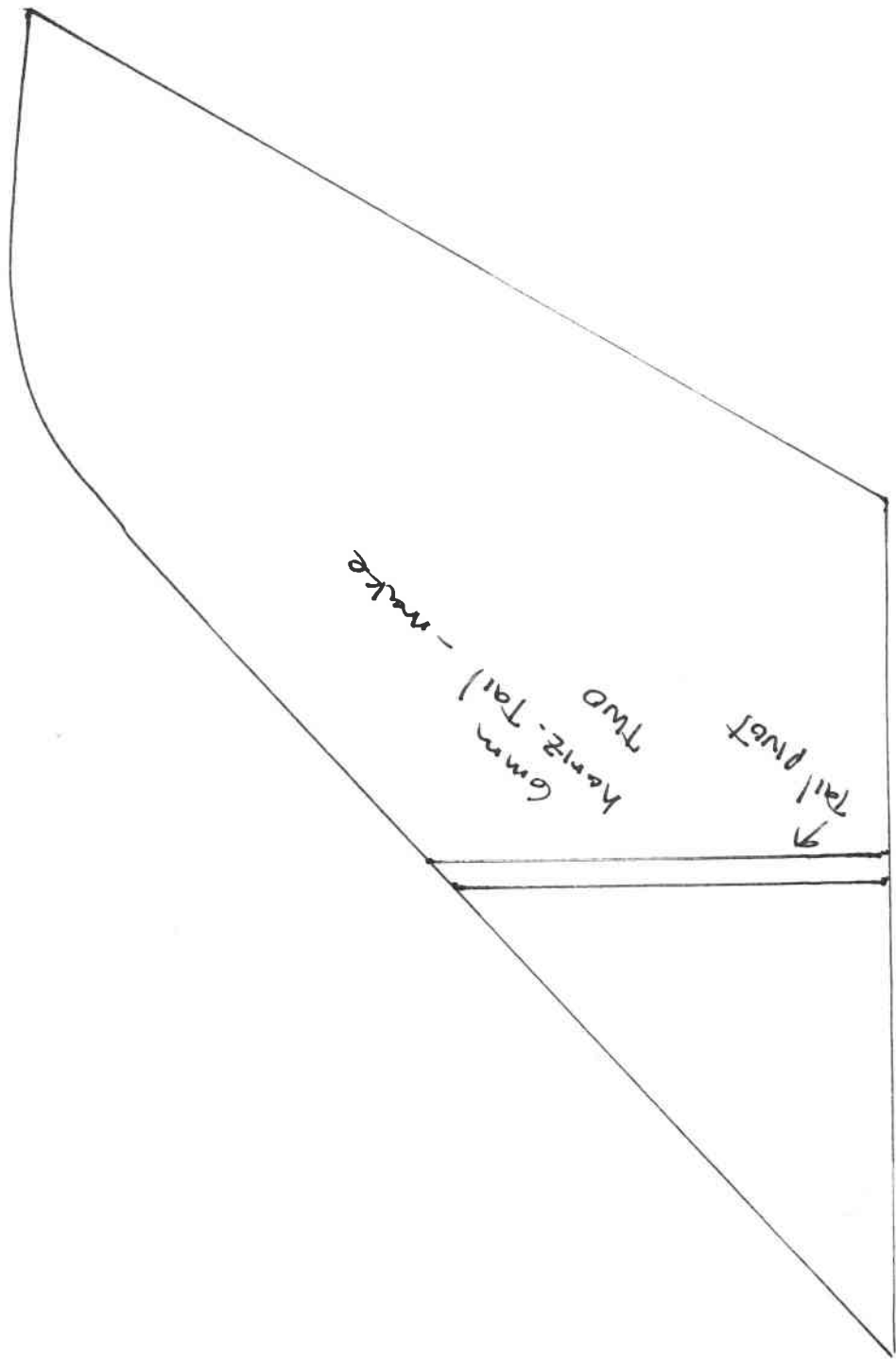
put esc, Rx - servos as far

forward as possible - use

long carbon reinforced pushrods

for tail to keep weight forward.

6"



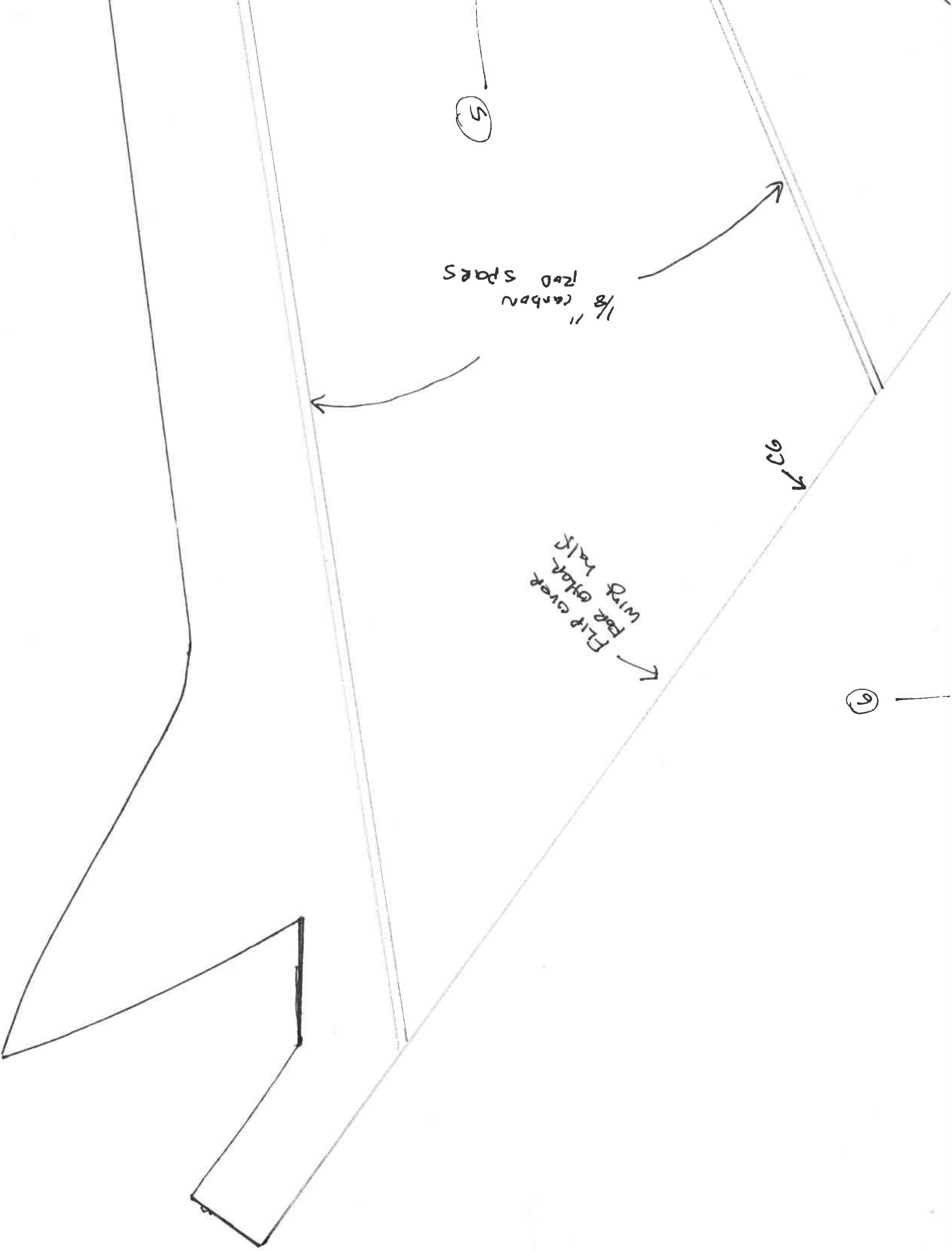
5

1/8" carbon
rod spars

926

Flip over
bar other
with tails

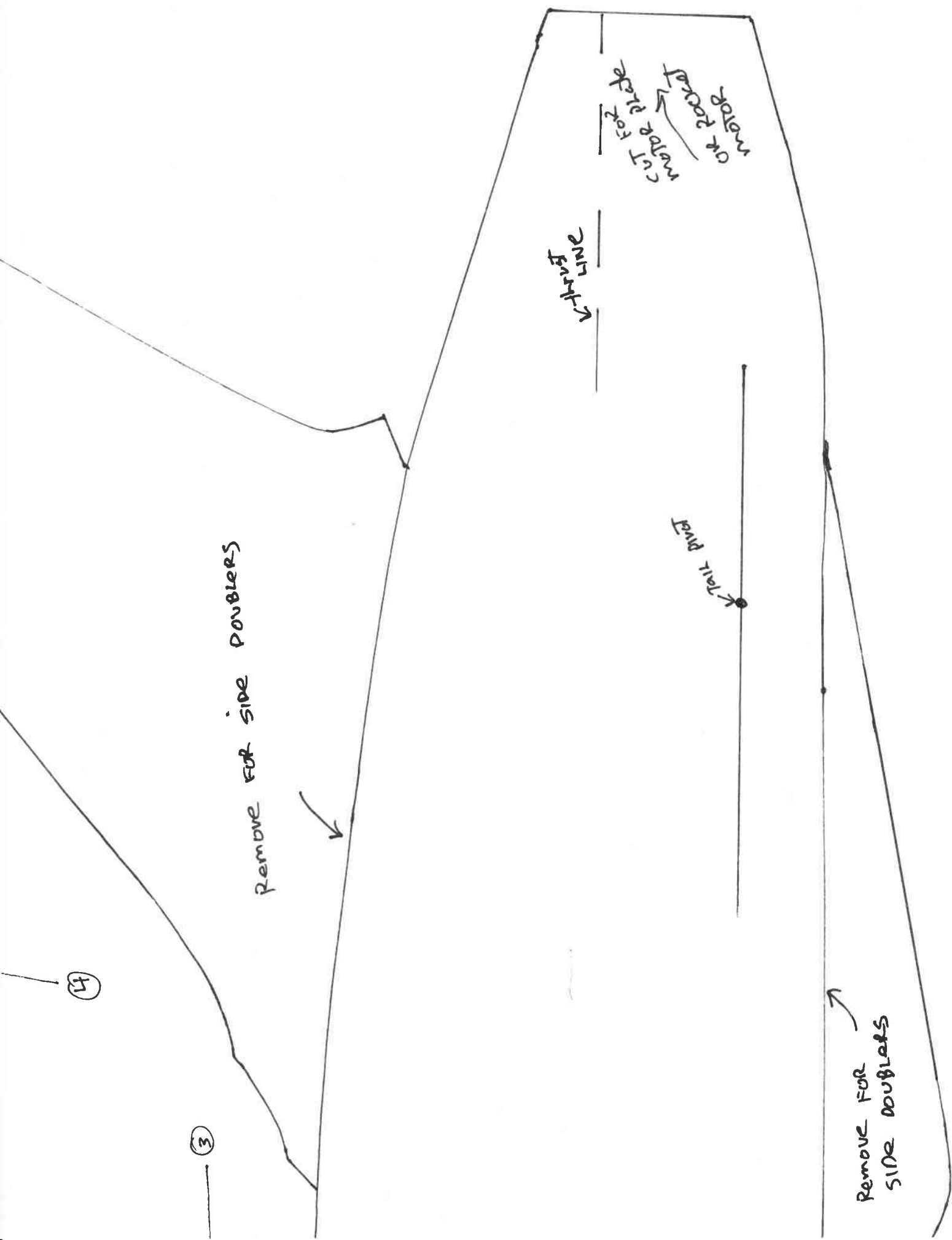
6





4

5



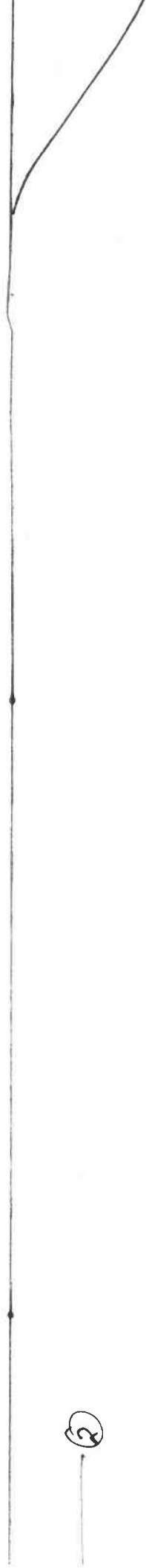


3



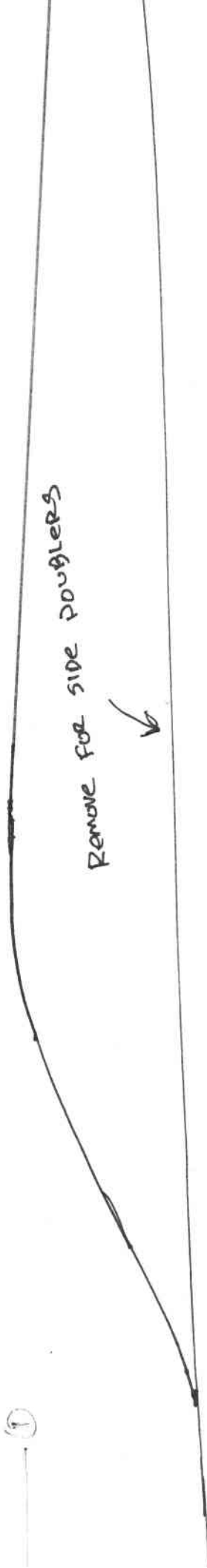
6

8



2

①



REMOVE FOR SIDE DOUBLERS



FUSE - 6mm
make left and right
then trim ventral/tail/canopy
from template and make left
right doublers.



②

①

