

5"

2014

FRANK BUERE

ALL RIGHTS RESERVED

NO REPRODUCTION FOR COMMERCIAL

USE OF RE-SALE

F-8U CRUSADE

39" long, 27.5" WS

± 15-16 oz RTF

2 servos

GRAYSON MICROJET V-3

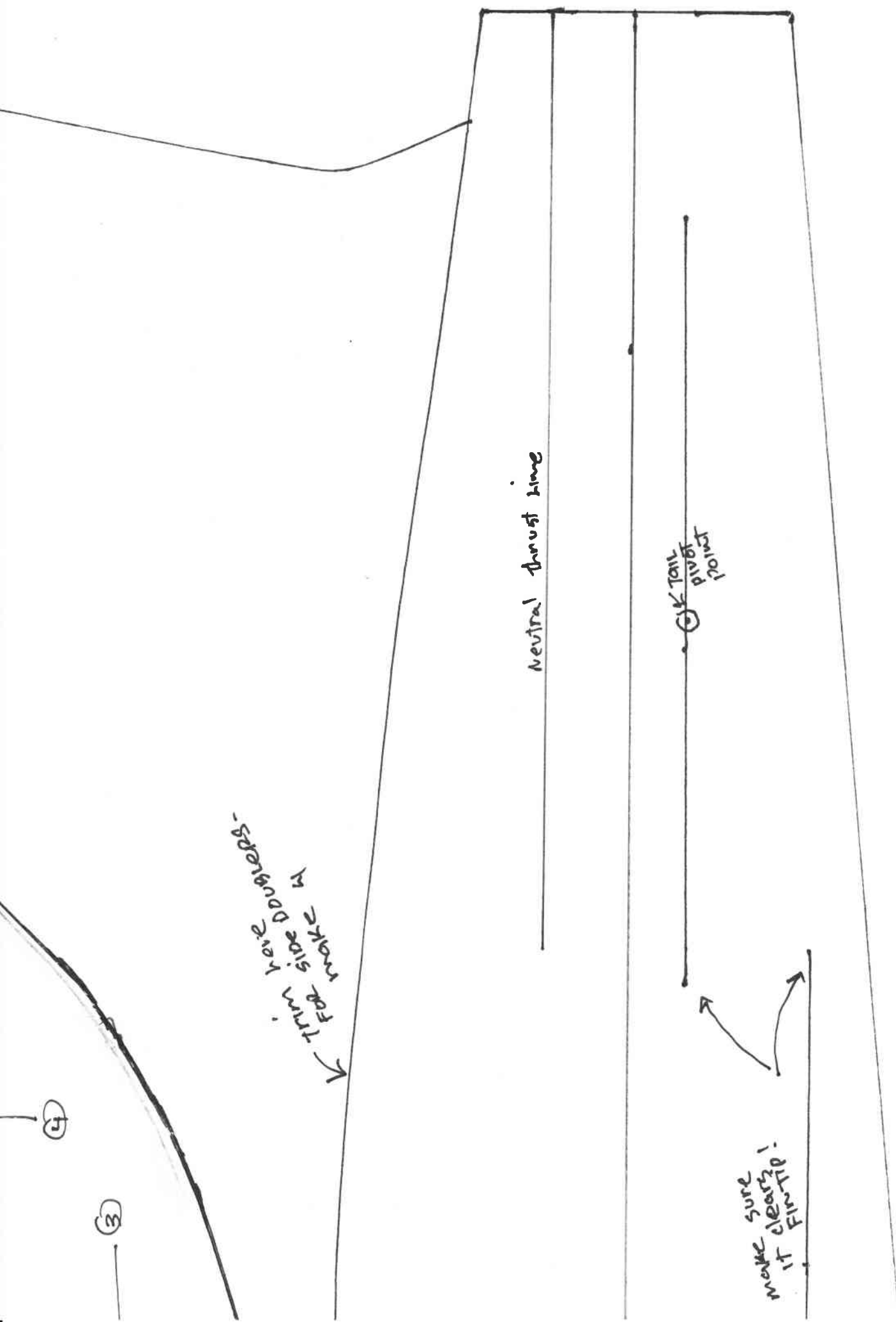
APC 6x4

800 mAh 3s

18 AMP ESC

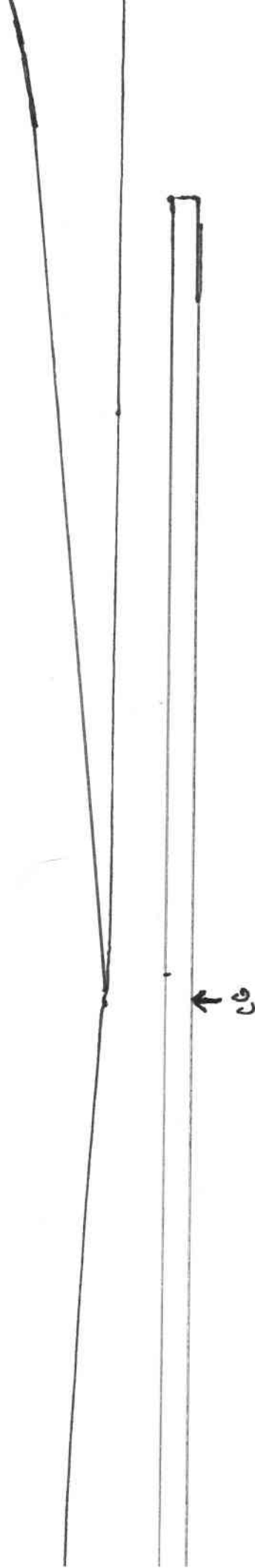
5"

4



3

2



Center Line

Vertical stroke
↓ Vertical Location

MOVED AT 45° angle
TO FUSE

①

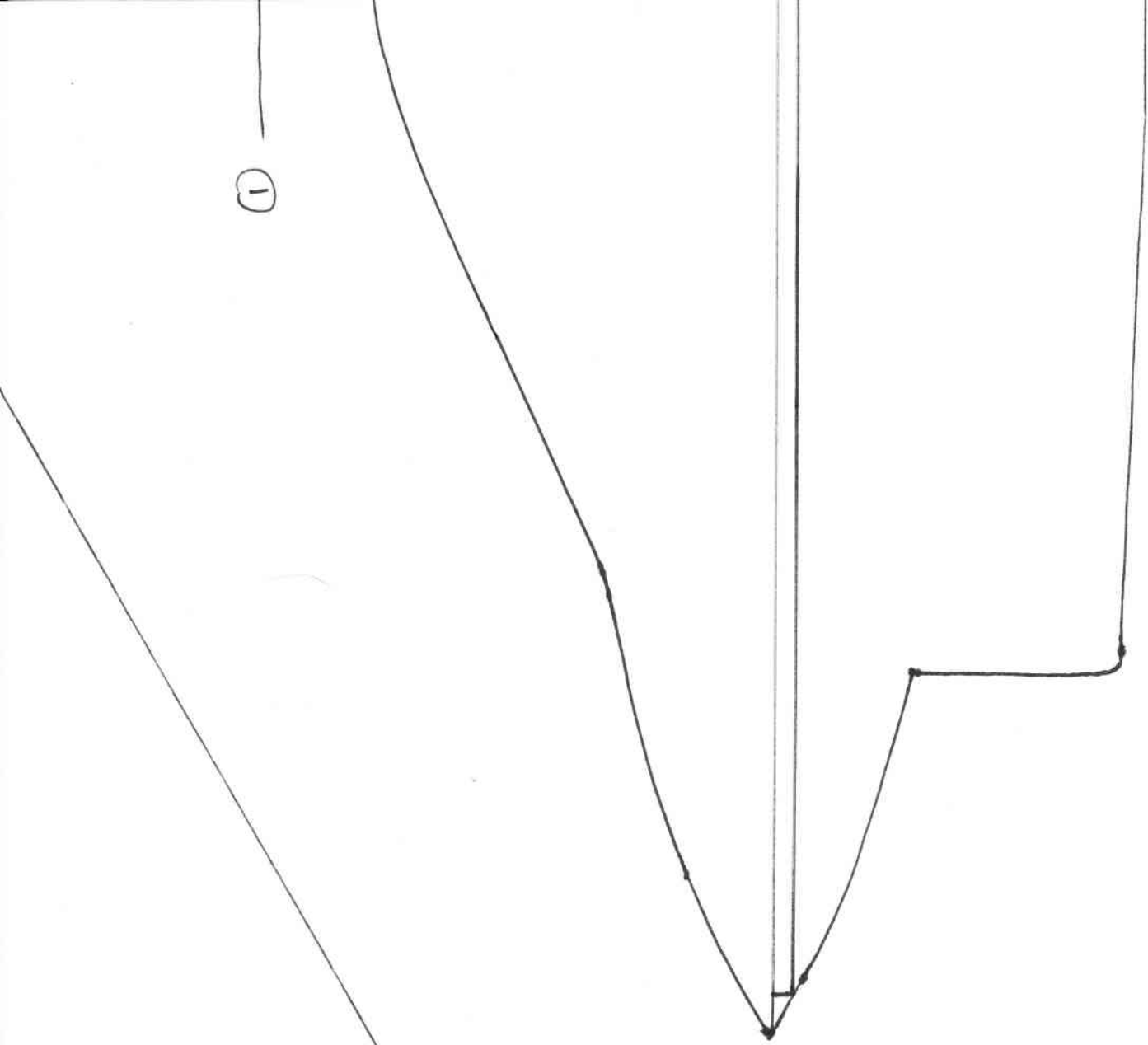
⑤

②

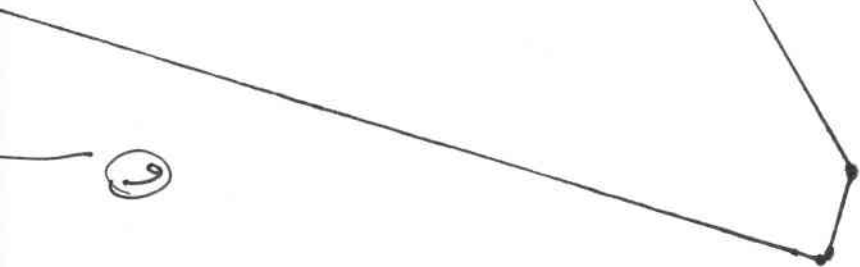
Fuse - 10mm
 make 11 connectors
 +
 1/2" carbon w/ Fin

↑
 give 1/2" carbon
 1200 for connections
 Fuse 2500
 for nose
 4000

①



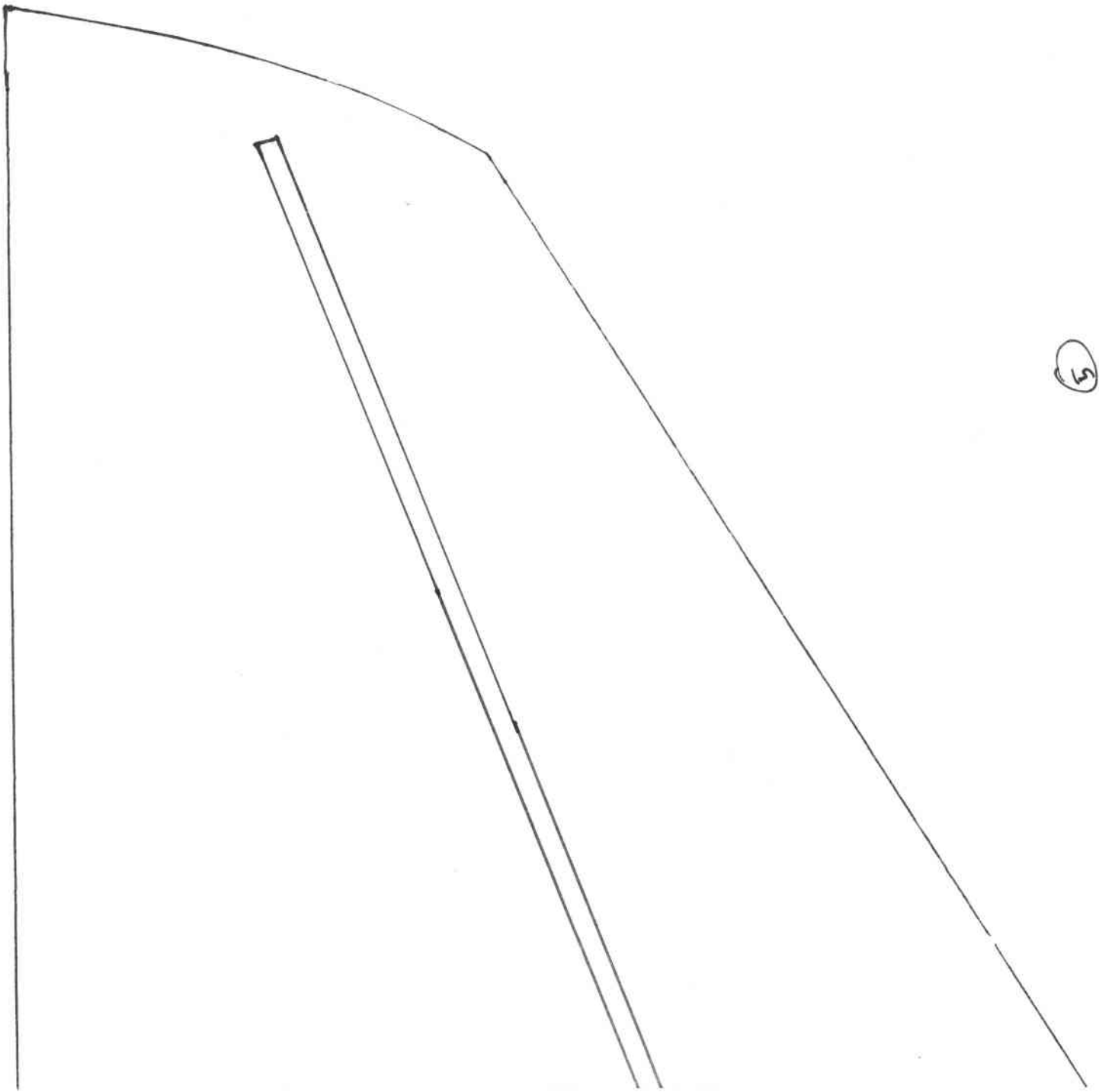
②



1/8" carbon rod
- cross spar -
give 1" tape
to bottom and
give to other
spars

1/8" carbon
rod gives 1" tape
to bottom

FLIP AND TRACE OTHER SIDE



5



